

# Nursing students' perceptions of community care and other areas of nursing practice- A review of the literature

Margriet van Iersel MSc Education

ACHIEVE – Centre of Applied Research

University of Applied Sciences

Faculty of Health

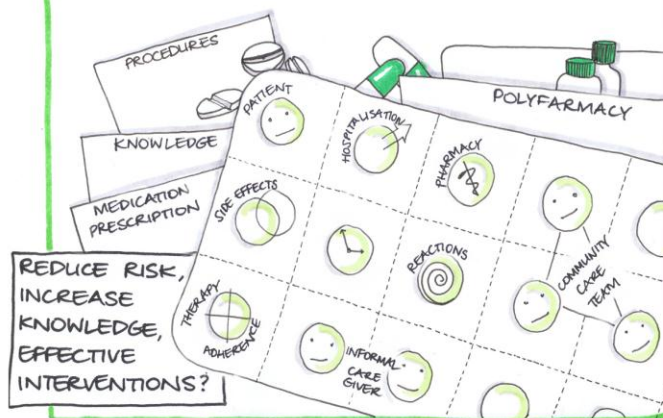
Amsterdam



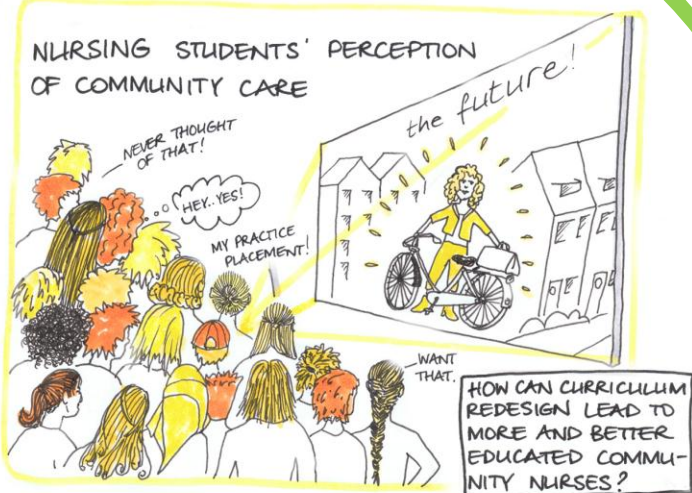
### NURSE-COORDINATED CARE DURING AND AFTER A CARDIAC HOSPITALIZATION



### MEDICATION SAFETY



### NURSING STUDENTS' PERCEPTION OF COMMUNITY CARE



### SHARED DECISION MAKING - OLDER PEOPLE WITH COMPLEX CARE NEEDS, THEIR INFORMAL CAREGIVERS AND PROFESSIONALS



 Introduction

Stereotypes



 Methods

Perceptions 

 Community care

Implications 

Elderly care 





## CHANGING POPULATION

Aging and increase of multimorbidity

Transition to care delivery in the patients' own home





## WHY STUDENTS' PERCEPTIONS?



Nursing shortages:  $\sim 3000$

Impopular field

Limited knowledge

71% - 5.4%





## METHODS

Search and selection March - August 2014

English peer reviewed articles

Databases ERIC®, PsycInfo®, MEDLINE®, and CINAHL®

In- and exclusion criteria

39 Articles included in the study







## START EDUCATION: STEREOTYPES

Misconceptions > stereotyping the profession

Gender

Subordination to other healthcare disciplines

Low academic standards

Limited career options

Moderate financial rewards

Media influence

Informal learning influences identity

YouTube: 3 stereotypes





## GENERAL HOSPITAL



Acute adult and paediatric care are most popular

Environment: fast-paced and skills

Preference often remains unchanged







## COMMUNITY CARE



Variation in caregiving

Low variation: elderly

Individual guidance

Socialisation to nursing group

Personal atmosphere

Work environment

Autonomy

Time constraints





## ELDERLY CARE



Negative perceptions of elderly as a group: unhealthy and dependent

Old = patient

Routine tasks, little technical skills, low status

Positive placement experience but no future job

Students' choice not based on patient population



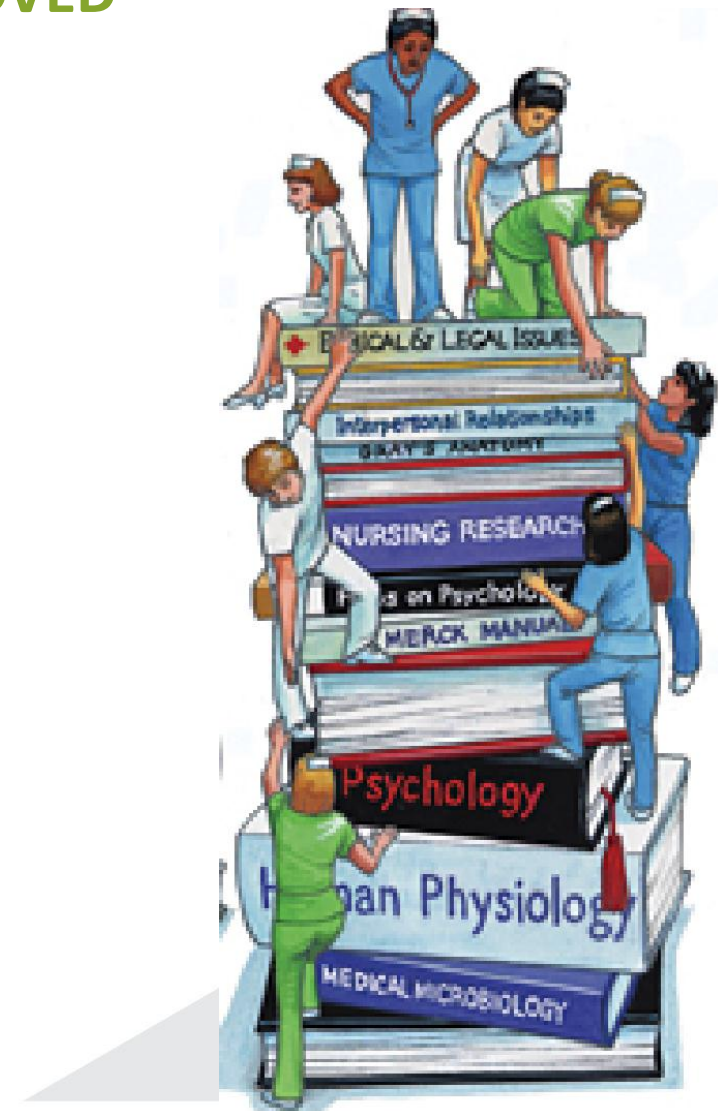


## “UNKNOWN IS UNLOVED”

Explicit complexity:  
technical skills in hospital



Implicit complexity:  
various circumstances in  
community care





## WHAT CAN WE, AS EDUCATORS, DO?

Role models

Curriculum content

Placements and pre-placement  
orientation

Reflection on our own perception





## MORE INFO?

Van Iersel, M., Latour, C. H., De Vos, R., Kirschner, P. A., & Scholte op Reimer, W. J. M. (2016). Nursing students' perceptions of community care and other areas of nursing practice - A review of the literature. *International Journal of Nursing Studies*, 61, 1-19.



#HvAcomplexcare

**Thank you!**